



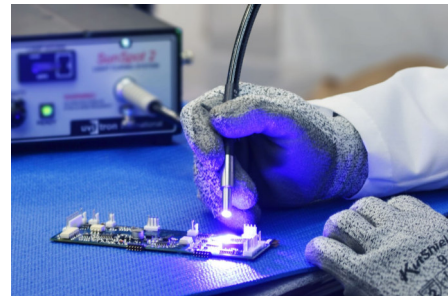
SunSpot 2 UV Spot Cure System is a next generation high-intensity compact light curing system. The unit was designed with low cost of ownership in mind, with its long-life UV/visible arc lamp, and filtered input long-life light guide. The SunSpot 2 features easy to use exposure time controls and foot pedal activation. The system weighs a mere 6 pounds, and its 4 x 8.5 x 10.5 inch size is the smallest in its class.

Highest Output Intensity:

The Sunspot 2 new 200W lamp delivers the highest intensity in the industry. With its 18+ W/cm² UVA and >30 W/cm² output from 300 to 550 nm, the system will maximize curing speed, and is compatible with high speed production automation equipment. This high intensity also makes the SunSpot 2 ideal for use with multi-pole light guides for simultaneous light delivery to 2, 3 or 4 curing zones, eliminating the need for multiple lamp systems.

Light Guides for Any Application

Optional light guides are available from single pole to 4 poles, and in a variety of diameters and lengths, to ensure efficient UV light curing for any application.



Features:

- + Accurate 1 to 99 second pedal-controlled exposure timer and shutter, switchable from timed to manual mode for operator control of curing duration, with shutter remaining open while pedal depressed.
- + Front panel locking intensity control, 35 to 100% combined power adjustment range.
- + Front panel hour meter for lamp replacement scheduling, lamp Ignited indicator illuminates when the lamp is lit, and lamp ready LED signals warm-up complete.
- + Rear-panel connector for external monitor/control via PC or PLC. Control signals include lamp off, shutter open, and hour meter reset. Monitoring signals include lamp ignited and lamp ready.
- + Power supply maintains constant lamp power regardless of variations in AC input or lamp voltages, provides stable light output, repeatable cure times, and long lamp life.
- + Lamp auto-dim when shutter closes with instant intensity return when shutter opens, extends life, reduces power consumption and heating.
- + Safety interlocks: shutter closes automatically if the light guide is removed, power is disconnected if the lamp cover is removed, light guide lock prevents accidental pull-out.
- + Regulated dual fans ensure cool operation, reliability and lamp life >2000 hours.