



Use as a stand alone unit (shown above), with an adjustable Flood Stand, or with the Rayven UV cure chamber (shown below).

The *INTELLIRAY* is a compact programmable UV flood curing system. The *INTELLIRAY* integrates all system components into a small lamp head which can be easily mounted anywhere on a factory floor - virtually no cabling or remote control boxes required. Just mount the head, connect the AC line cord, and start timed exposure curing! The system contains an integrated retractable shade type shutter, which allows for repeatable exposure timing and shields the user from UV radiation. The system's LCD display and digital keypad make programming and monitoring of curing operations a *snap*. The long life 400 or 600-Watt metal halide type lamp and parabolic reflector illuminate an 8 x 6 inch curing area with evenly distributed 115 mW/cm² (400W) or 175 mW/cm² (600W) UVA light (320–390nm).



FEATURES

System Timers

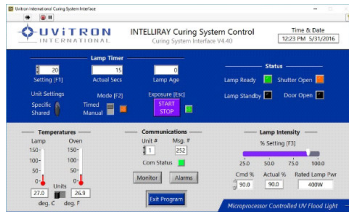
Duration of curing is controlled by a 1 to 9999 second or hour exposure timer that actuates the shutter. The exposure timer also has a user controlled manual mode in which exposure time increments on the display to indicate elapsed time of a cure. A second timer is used to display the age of the lamp in hours, and triggers a panel-mounted light to warn the user when the lamp should be replaced.

- **Lamp Intensity Control**

The system has a user adjustable intensity level. This feature provides the flexibility of choosing appropriate curing intensity for sensitive materials.

- **Standby mode**

The unit automatically reduces lamp power by one half when the shutter is closed. This reduces excessive heat and therefore increases life of system components, without the need to power down.



Status Indicators

Four front panel LEDs are provided: Lamp ready, system in standby mode, shutter open, and system alarm.

- **External logic signal interface**

The system can be remotely monitored and controlled using logic signals available at a 15-pin D-sub connector on the unit's rear panel. The digital logic functions allow high-speed control of the IntelliRay for applications requiring a direct interface with machine controllers or PLCs.

- **Remote control via PC serial port**

The system can also be remotely controlled via an RS232 / RS485 serial port. A Windows™ compatible graphical interface program allows all system functions to be exercised (see photo), and with RS485, multiple units can be networked.

- **Foot pedal control**

An optional shutter control foot pedal is available for applications requiring hands-free operation. The pedal can be used in conjunction with the system's exposure timer, or in a manual mode in which the shutter remains open as long as the pedal is pressed.

- **Lamp power regulation**

The system's switch mode power supply maintains constant lamp power regardless of variations in AC line input or lamp voltages. The result is repeatable curing times throughout the life of the lamp.

- **Auto-Range AC line input**

The *Auto-Ranging* 90-132 / 180-265 VAC line input makes the Uvitron *INTELLIRAY* easy to use in any country, with no wiring changes or voltage select switching required.

- **Forced air cooling**

A baffled fan cooling system with removable filter channels cooling air appropriately to all components to insure high system reliability.

- **Optional lamp spectrums**

The IntelliRay is available with UVA, UVB & visible spectrum lamps, which ensure compatibility with adhesives and coatings from all manufacturers.

18 Harlan Drive ■ Limington, ME 04049 USA
 ■ voice +1 877-546-1797 ■ fax +1 207-637-3668
 www.fusionet.com